



## Room Units for Boiler Temperature Control

**QAA50.110**

PPS Interface

- 
- **Digital, multifunctional room units for enhancing the functionality of boiler controllers.**
  - **With integrated temperature sensor, heating program and a number of control functions.**

### Use

---

Use

Used in combination with boiler or heating controllers.

Room temperature control in:

- Single or 2-family houses
- Smaller multifamily houses
- Holiday houses and villas

Application

Standard heating systems, such as radiator, convector, underfloor and ceiling heating systems, and radiant panels.

## Functions

---

- Operating functions
- Operating levels based on ergonomic and functional considerations
  - Operating mode, setpoint adjustment and occupancy button
  - Every setting or change is displayed and thus acknowledged
  - 7-segment display
- Other features
- Elegant housing made of recyclable plastic
  - Communication with the boiler temperature controller over PPS
  - Powered via PPS
  - Straightforward installation
  - Cable entry for wall mounting or mounting on a recessed conduit box

## Type summary

---

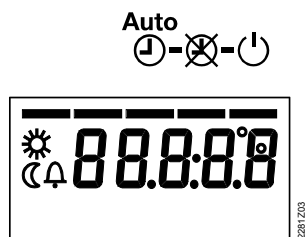
Type	Type reference
QAA50.110	Room unit bus (PPS)

## Mechanical design

---

- Room unit
- The unit consists of the following components:
- Housing with integrated electronics and operating elements
  - Base for wall mounting with the connection terminals
- Operating elements
- Button for selecting the operating mode
  - Setting knob for adjusting the setpoint
  - Occupancy button for temporary changeover

Display



## Technical data

Operating voltage	PPS	
	Terminals	2-wire connection (interchangeable)
	cable length	max. 75 m with a cross-section of 0.5 mm <sup>2</sup>
	Cable resistance	max. 2 x 3 Ohm
	Power consumption	45 mW (typically)
Protection	Safety class	III to EN 60730 (when mounted correctly)
	Degree of protection of housing	IP 20 to EN 60529
	Contamination environment	to EN 60730
Environmental conditions	Operation	IEC 721-3-3 class 3K 5
	Temperature	0...50 °C
	Humidity	< 85 % r.h.
	Transport	IEC 721-3-2 class 2K 3
	Temperature	-25...70 °C
	Humidity	< 95 % r.h.
	Storage	IEC 721-3-1 class 1K 3
	Temperature	-25...70 °C
	Humidity	< 95 % r.h.
	Standards	EU Conformity (CE)
Room sensor	Measuring range	0...45 °C
Other features	Backup of time switch	None
	Software class	A to EN 60 730
	Weight	approx. 0.17 kg

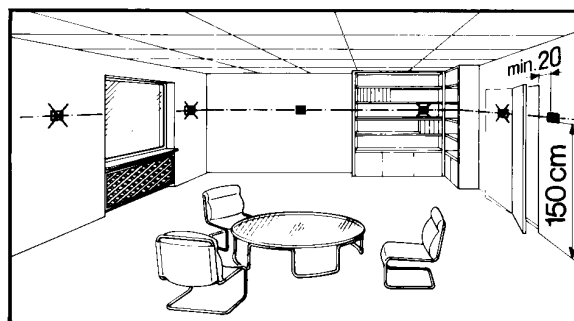
## Notes

### Product liability

- The products may only be used in building services plant and applications as described above.
- When using the products, all requirements specified under "Technical data" must be observed.
- The local regulations for electrical installation must be complied with.

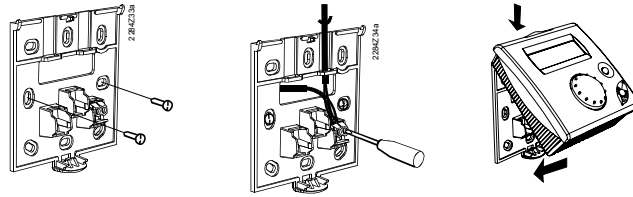
### Engineering

- In the main living room or reference room.
- The place of installation should be chosen so that the sensor can capture the room temperature as accurately as possible, without being affected by direct solar radiation or other heating or cooling sources.
- Mounting height is about 1.5 meters above the floor.
- The unit can be fitted to most commercially available recessed conduit boxes or directly on the wall.



## Installation

### Wall mounting

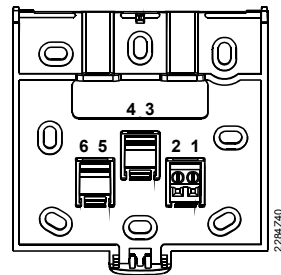


The controller may not be exposed to dripping water.

## Installation

The local regulations for electrical installations must be complied with.

## Connection diagram



1	A6	PPS (interchangeable)
2	MB	PPS (interchangeable)
3	-	-
4	-	-
5	-	-
6	-	-



## Dimensions

